

THE NATURAL WORLD AND DISTANT PAST - GEOLOGY

The simple complexity or complex simplicity
of geology in Iceland

Martin Gasser



THE NATURAL WORLD AND DISTANT PAST - GEOLOGY



The simple complexity or complex simplicity
of geology in Iceland

- How did this rock form and end up here?
- How did this landscape take shape?



DVERGASTEINN





DVERGASTEINN

Honeycomb weathering



DVERGASTEINN

Tafoni





BREIÐDALSETUR

MÁLVIÐINDI – VÆÐFÆÐI – SAGAN
RESEARCH AND HERITAGE CENTRE



Skötufjörður



Urtusteynn, Hnífssalur road









BREIÐDALSSÆTUR

MÁLVIÐINDI - VABDFF.EDI - SAGAN
RESEARCH AND HERITAGE CENTRE

Hljóðaklettur







Angel Island seawall, lower part not weathered

1960



2004







BREIÐDALSETUR

MÁLVIÐINDI – VABEKKI – SAGAN
RESEARCH AND HERITAGE CENTRE





BREIÐDALSETUR

MÁLVIÐINDI – IARÐFRÆÐI – SAGAN
RESEARCH AND HERITAGE CENTRE





BREIDDALSSETUR
MÁLVIÐI - TARBÆÐI - SAGAN
RESEARCH AND HERITAGE CENTRE





BREIÐDALSETUR
MÁLVIÐI - VABERÆÐI - SAGAN
RESEARCH AND HERITAGE CENTRE





BREIDDALSSETUR
MÁLVIÐI - LARBEIÐI - SAGAN
RESEARCH AND HERITAGE CENTRE





BREIÐDALSETUR
MÁLVIÐINDI – TÆRÐERÆÐI – SAGAN
RESEARCH AND HERITAGE CENTRE





BREIDDALSSETUR
MÁLVIÐI - TARBÆÐI - SAGAN
RESEARCH AND HERITAGE CENTRE



September
2014









BREIÐDALSETUR

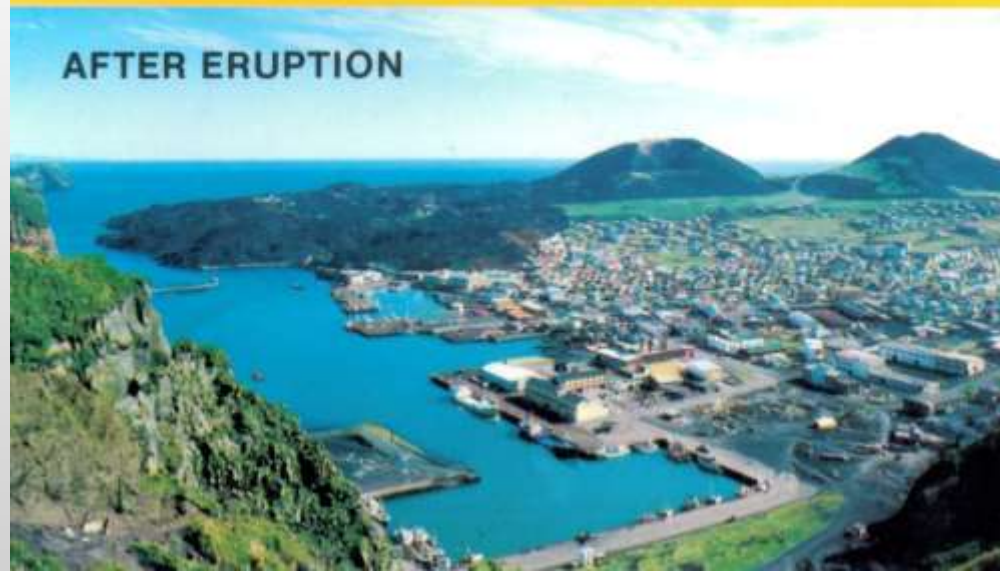
MÁLVIÐINDI – VABEKKI – SAGAN
RESEARCH AND HERITAGE CENTRE

BEFORE ERUPTION



* VESTMANNAEYJAR *

AFTER ERUPTION





BREIÐDALSETUR
MÁLVIÐINDI – VABEKKI – SAGAN
RESEARCH AND HERITAGE CENTRE

Spreading 2cm/year
on average

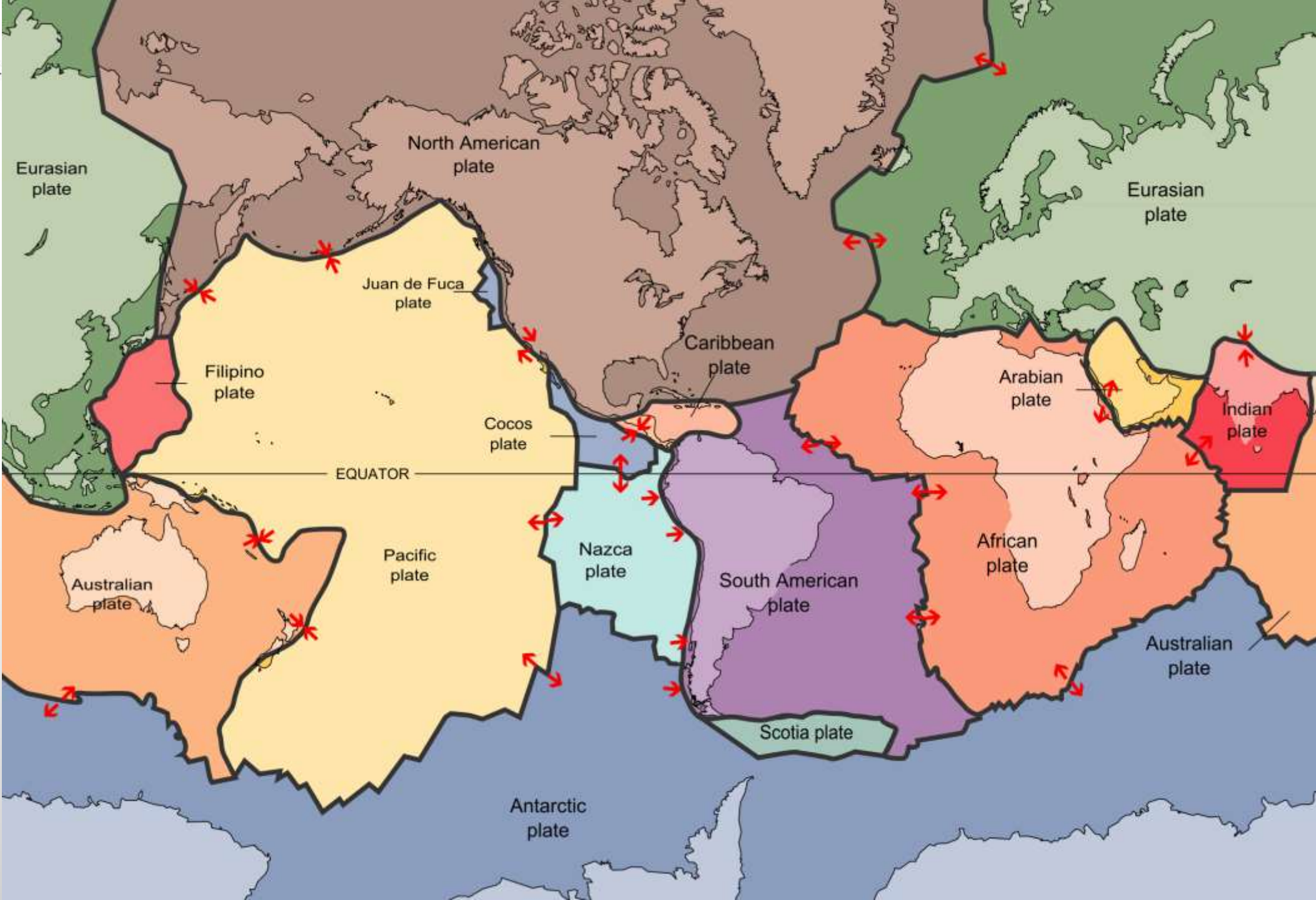




BREIDDALSSETUR
MÁLVIÐI - TARBÆÐI - SAGAN
RESEARCH AND HERITAGE CENTRE



Alfred Lothar Wegener (1 November 1880 – November 1930) was a German polar researcher, geophysicist and meteorologist.





BREIDDALSSETUR
MÁLVIÐI - TARBÆÐI - SAGAN
RESEARCH AND HERITAGE CENTRE



George Patrick Leonard Walker (1926 –2005) was a British geologist who helped to establish the theory of plate tectonics in the 1960ies.





BREIÐDALSSÆTUR

MÁLVIÐINDI – IARÐFRÆÐI – SAGAN
RESEARCH AND HERITAGE CENTRE

HOME » FRONTIERS IN RETREAT, 2013-2018



FRONTIERS IN RETREAT, 2013-2018

Efnisorð: *Frontiers in Retreat*

Frontiers in Retreat, 2013-2018, er vettvangur rannsóknamiðaðra gestavinnustofa með það að markmiði að stuðla að þverfaglegu samtali um vistfræðileg málefni. Stofnað hefur verið nýtt Evrópsk netverk gestavinnustofa, lista- og menntastofnana, listamanna og sérfræðinga í hinum ýmsu greinum. Framkvæði af verkefninu og skipuleggjandi er HIAP – Helsinki International Artist Programme.

Samstarfsaðilar Mustarinda í Finnlandi, Scottish Sculpture Workshop SSW í Skotlandi, Interdisciplinary Art Group

SERDE í Lettlandi, Cultural Front – GRAD í Serbíu, Centre d'Art i Natura de Farrera á Spáni og Jutempus í Litháen. Verkefnið er fjármagnað með styrk úr menningaráætlun ESB.



Streitishvarf, 2014



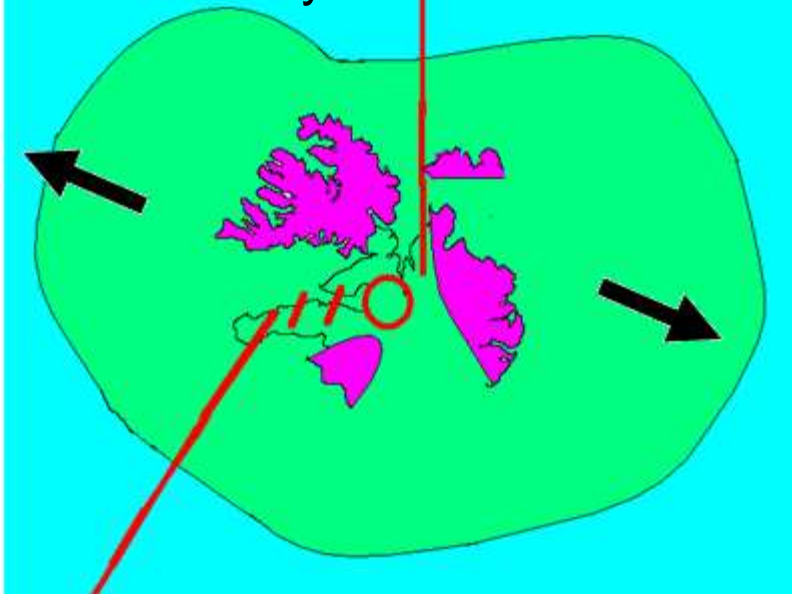
BREIÐDALSETUR
MÁLVIÐINDI – VÆÐFÆÐI – SAGA
RESEARCH AND HERITAGE CENTRE



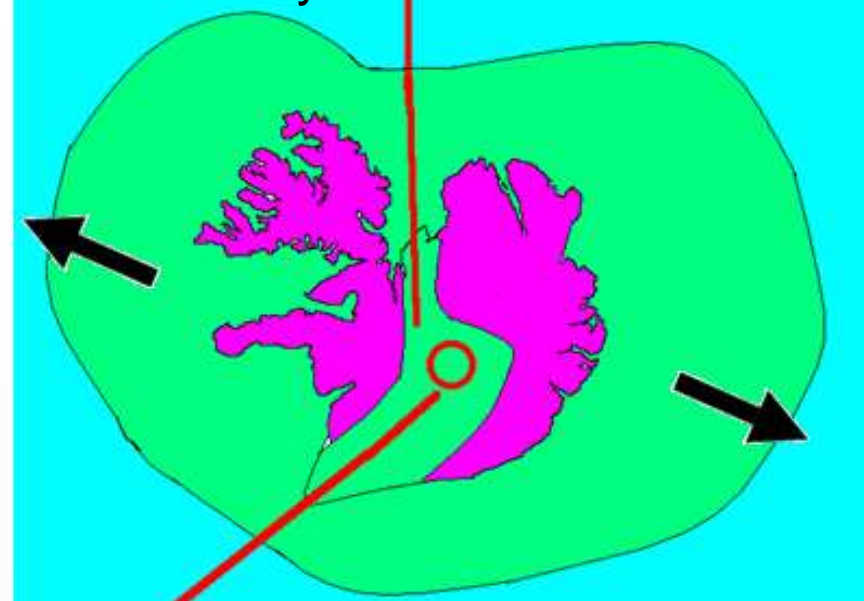


BREIÐDALSETUR
MÁLVIÐINDI - VÆÐFÆÐI - SAGAN
RESEARCH AND HERITAGE CENTRE

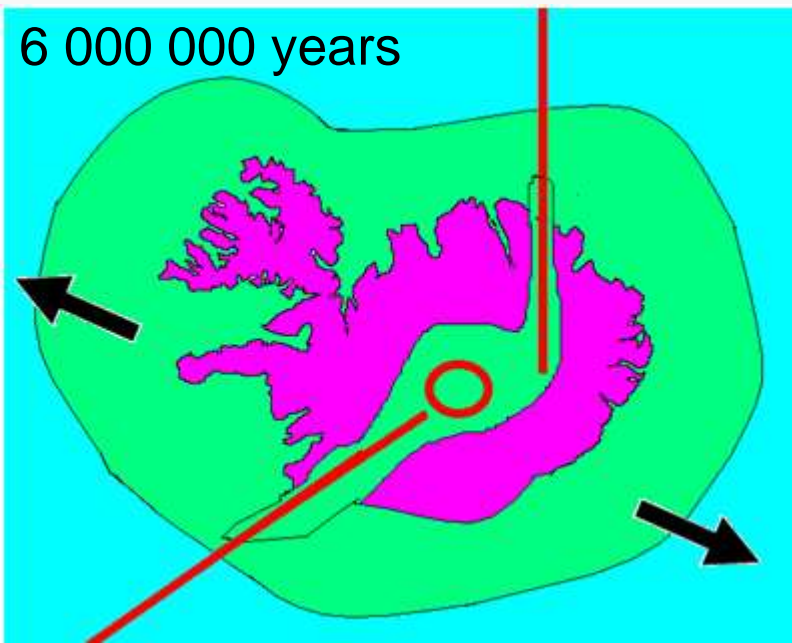
15 000 000 years



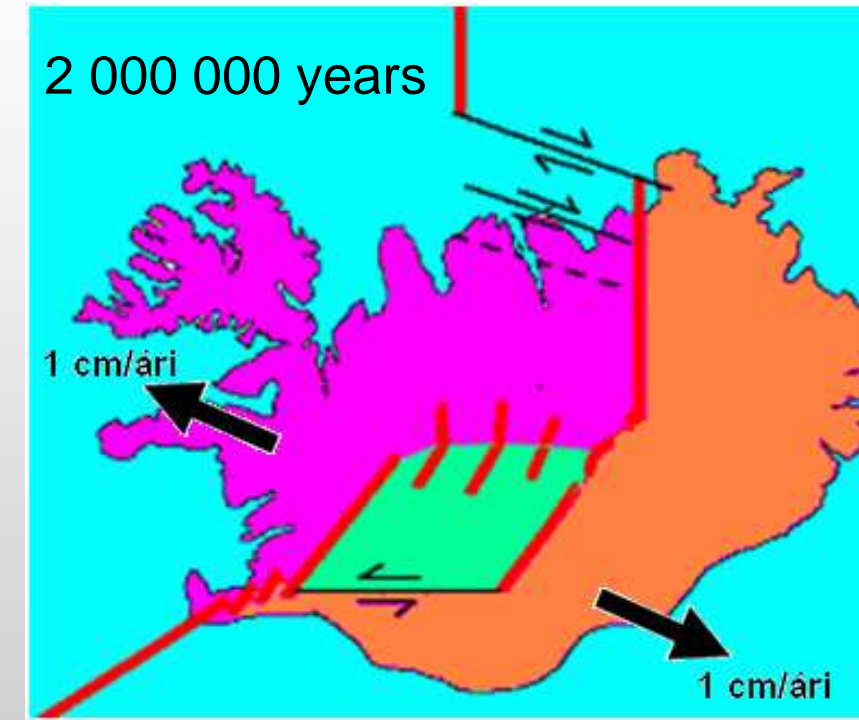
7 000 000 years



6 000 000 years



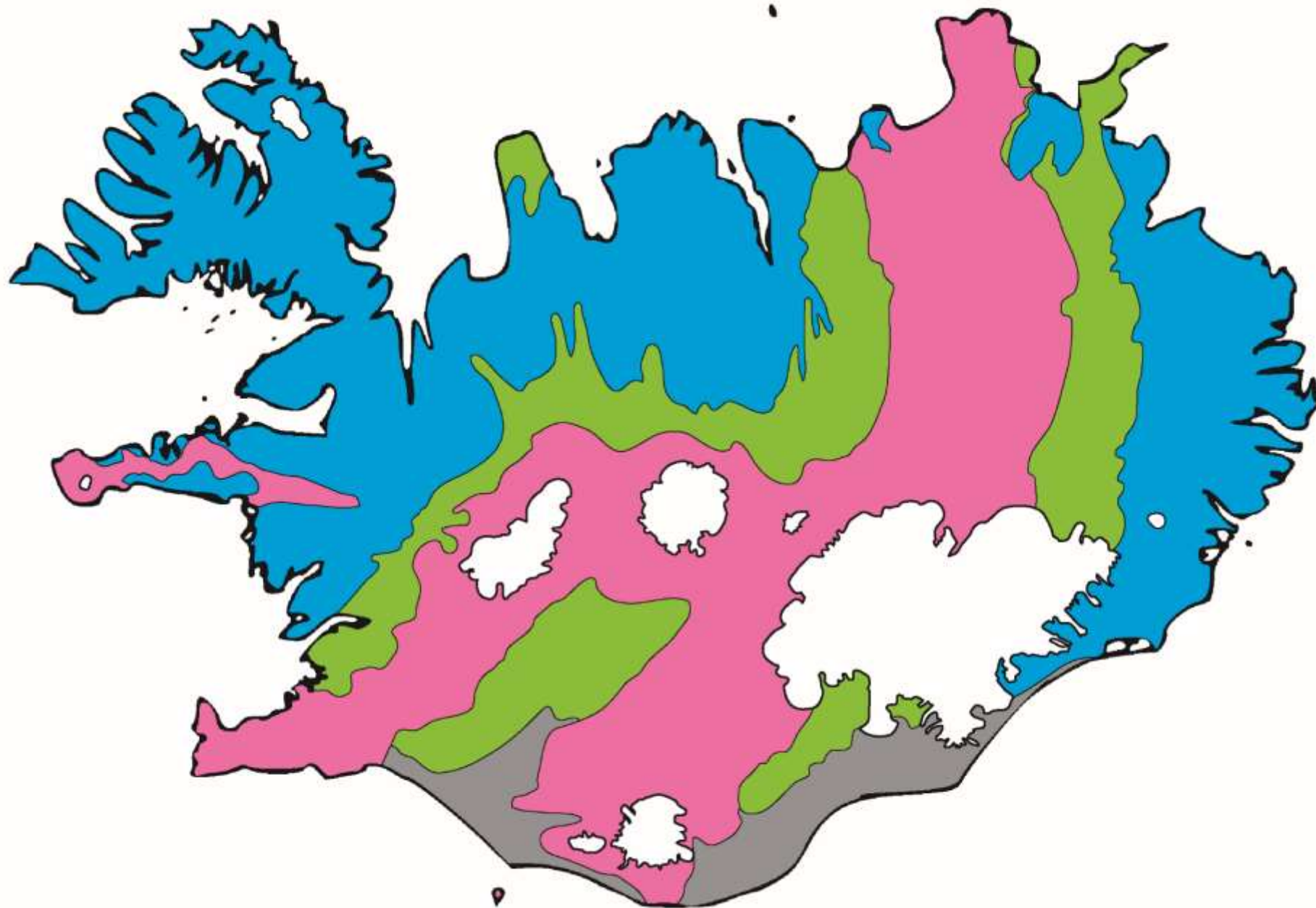
2 000 000 years





BREIÐDALSETUR

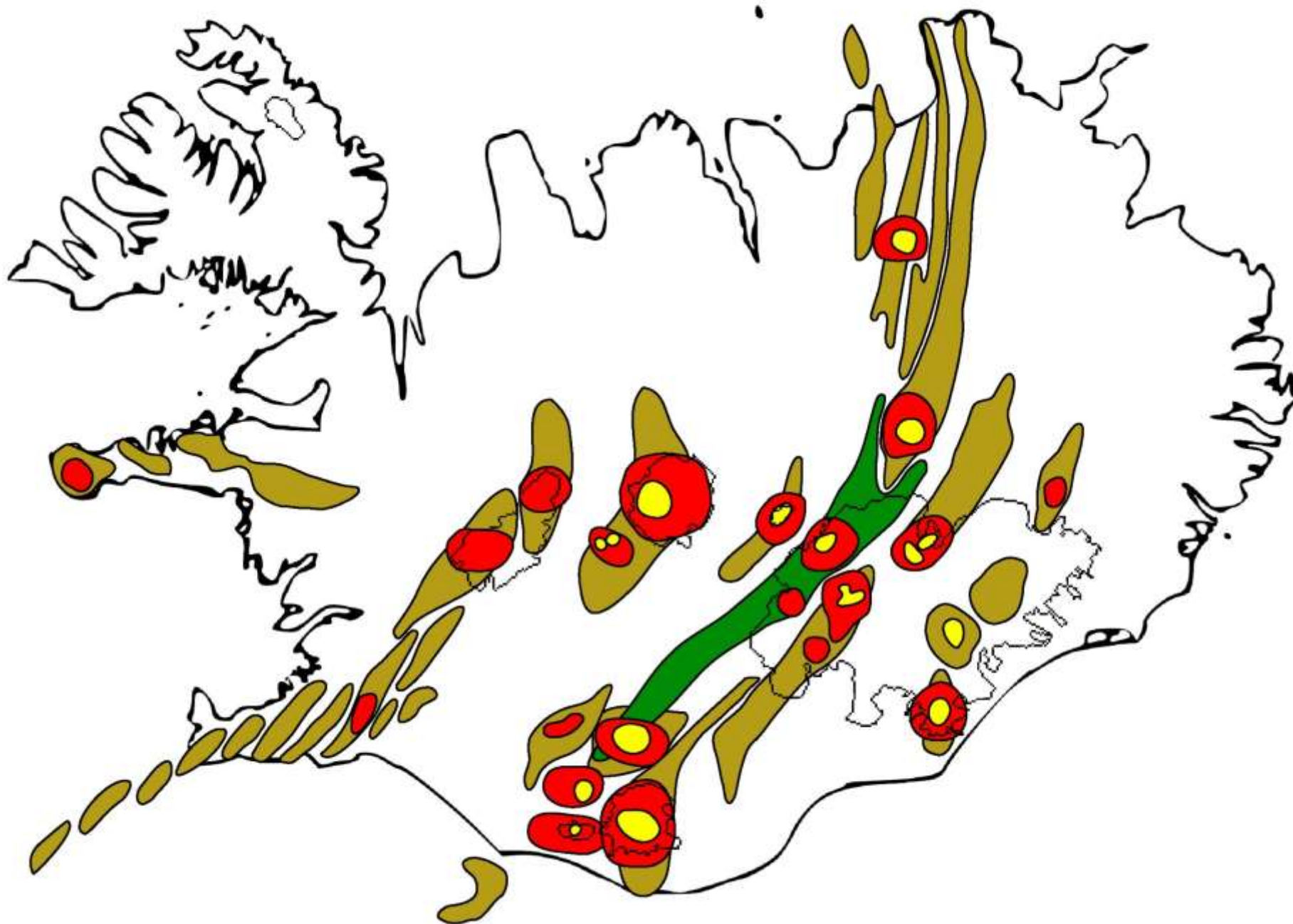
MÁLVIÐINDI – VÆÐFÆÐI – SAGAN
RESEARCH AND HERITAGE CENTRE





BREIÐDALSETUR

MÁLVIÐINDI – VÆÐFÆÐI – SAGAN
RESEARCH AND HERITAGE CENTRE





BREIDDALSSETUR
MÁLVIÐI - LARFELÐI - SAGAN
RESEARCH AND HERITAGE CENTRE





BREIDDALSSETUR

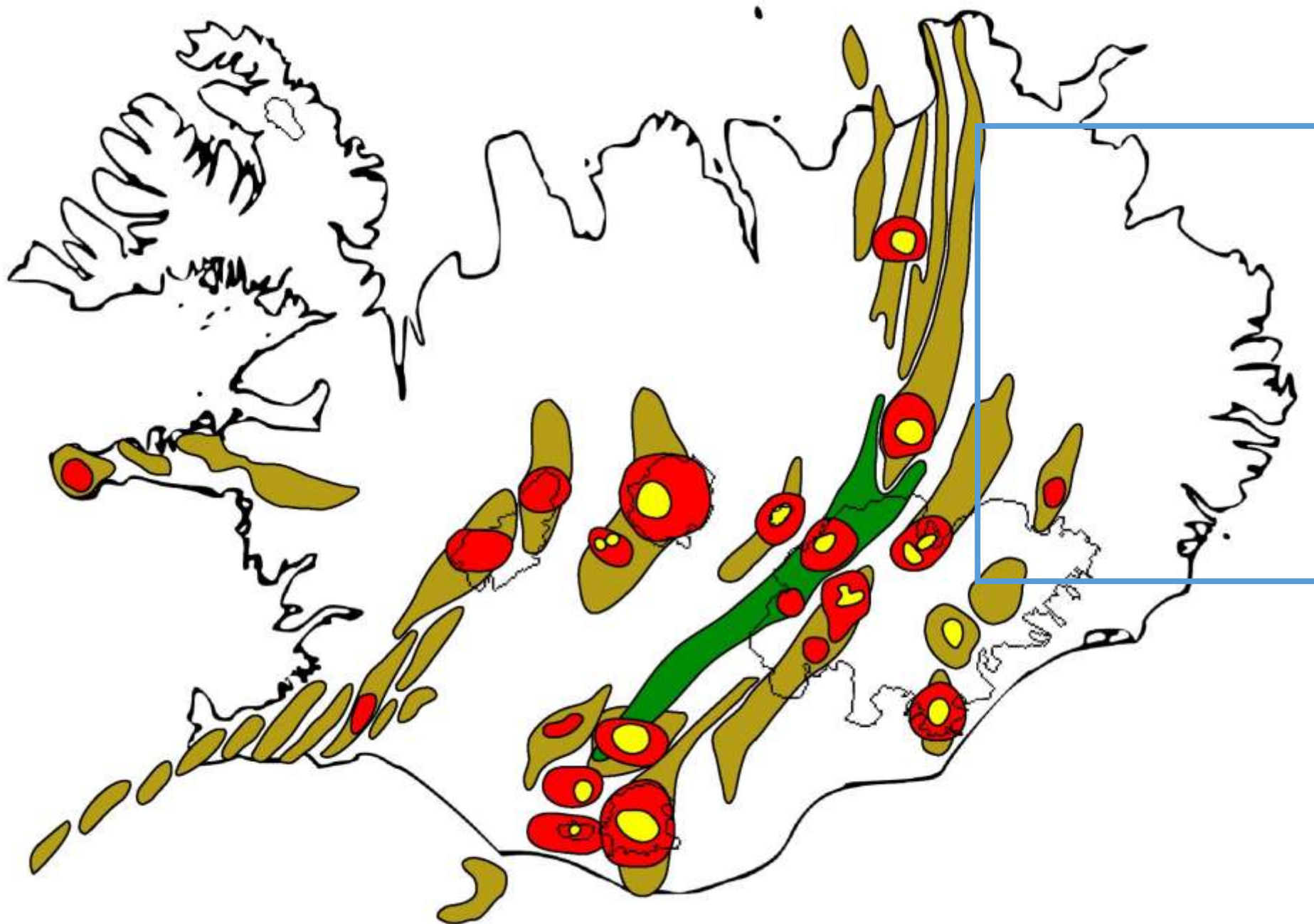
MÁLVIÐI - VABFELÐI - SAGAN
RESEARCH AND HERITAGE CENTRE

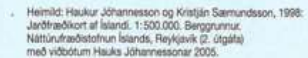




BREIÐDALSETUR

MÁLVIÐINDI – VÆÐFÆÐI – SAGAN
RESEARCH AND HERITAGE CENTRE



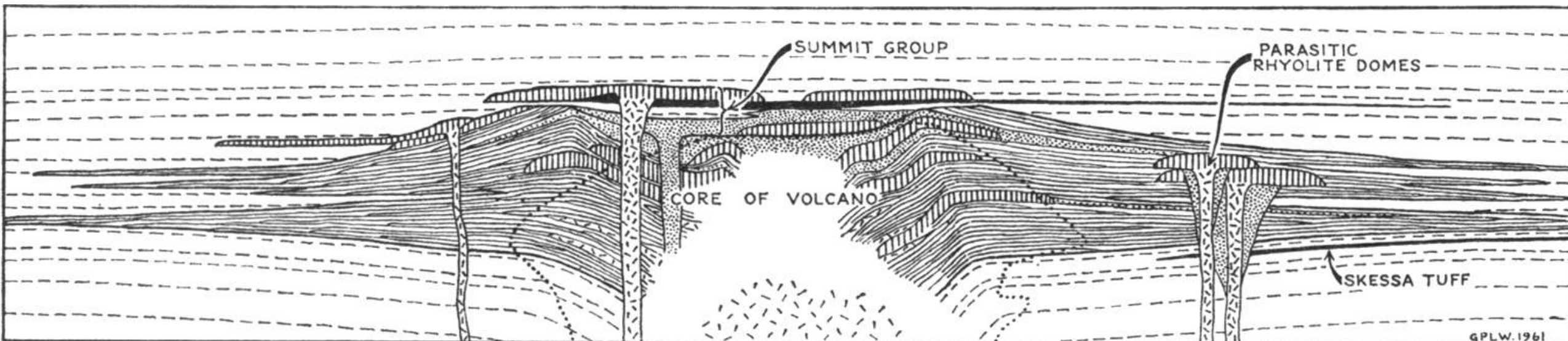




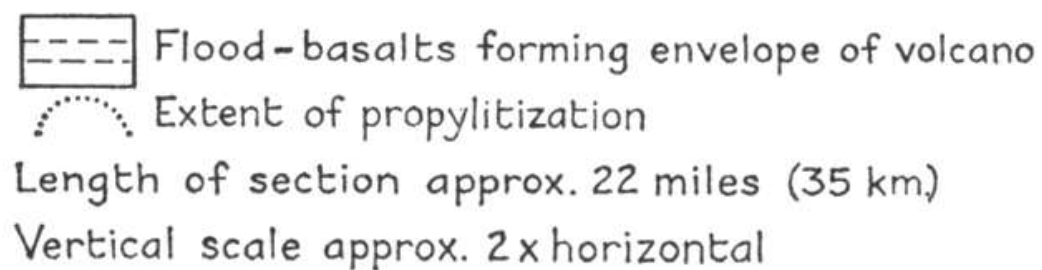
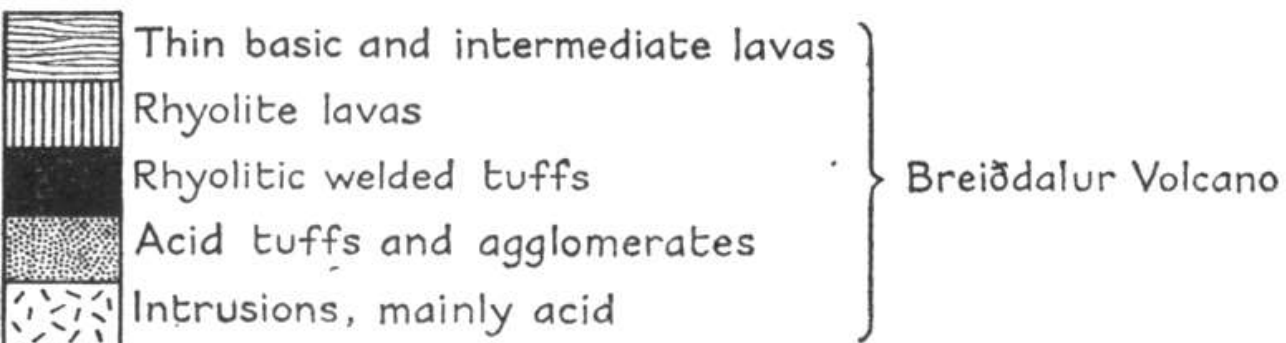


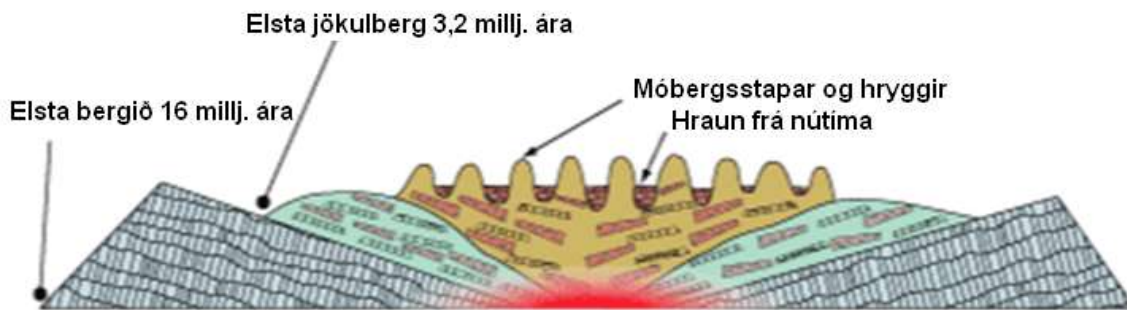
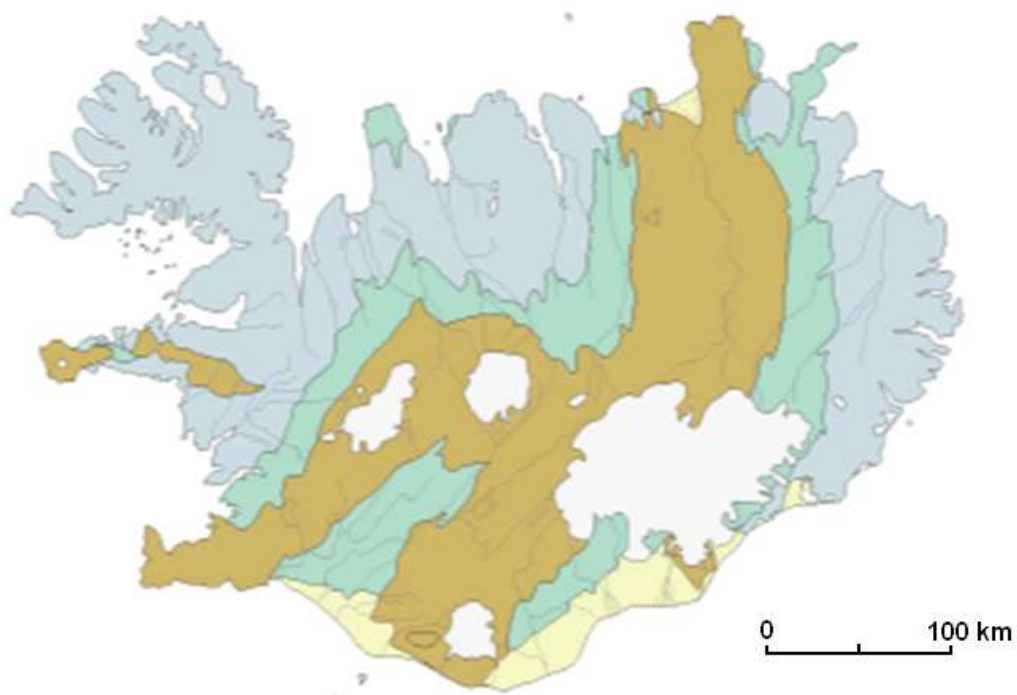
BREIÐDALSETUR

MÁLVIÐINDI - VABEKKI - SAGAN
RESEARCH AND HERITAGE CENTRE



GPLW.1961





- Hraun frá nútíma
- Móberg, hraunlög og setlög frá síðari hluta isaldar yngri en 0,7 millj. ára
- Gosberg og setlög frá siðpliösen og fyrri hluta isaldar 0,7 - 3,3 millj. ára
- Gosberg og setlög frá tertier (miósen og pliösen) eldra en 3,3 millj. ára
- Laus jarölög frá nútíma





BREIÐDALSETUR

MÁLVIÐINDI – VABERKJÆÐI – SAGAN
RESEARCH AND HERITAGE CENTRE

20 000 years ago



20 000 years ago



20 000 years ago

Iceland





BREIÐDALSETUR

MÁLVIÐINDI – VÆÐFÆÐI – SAGAN
RESEARCH AND HERITAGE CENTRE





10 000 years ago





BREIÐDALSETUR
MÁLVIÐINDI – VÆÐFÆÐI – SAGAN
RESEARCH AND HERITAGE CENTRE





BREIÐDALSETUR
MÁLVIÐINDI – TÆRFFÆÐI – SAGAN
RESEARCH AND HERITAGE CENTRE

1000 years ago





BREIÐDALSETUR

MÁLVIÐINDI - VÆÐFÆÐI - SAGAN
RESEARCH AND HERITAGE CENTRE

Today





BREIÐDALSETUR
MÁLVIÐINDI – VABERKLEÐI – SAGAN
RESEARCH AND HERITAGE CENTRE

Forecast 100 years from now





BREIÐDALSETUR

MÁLVIÐINDI – VÆÐFÆÐI – SAGAN
RESEARCH AND HERITAGE CENTRE





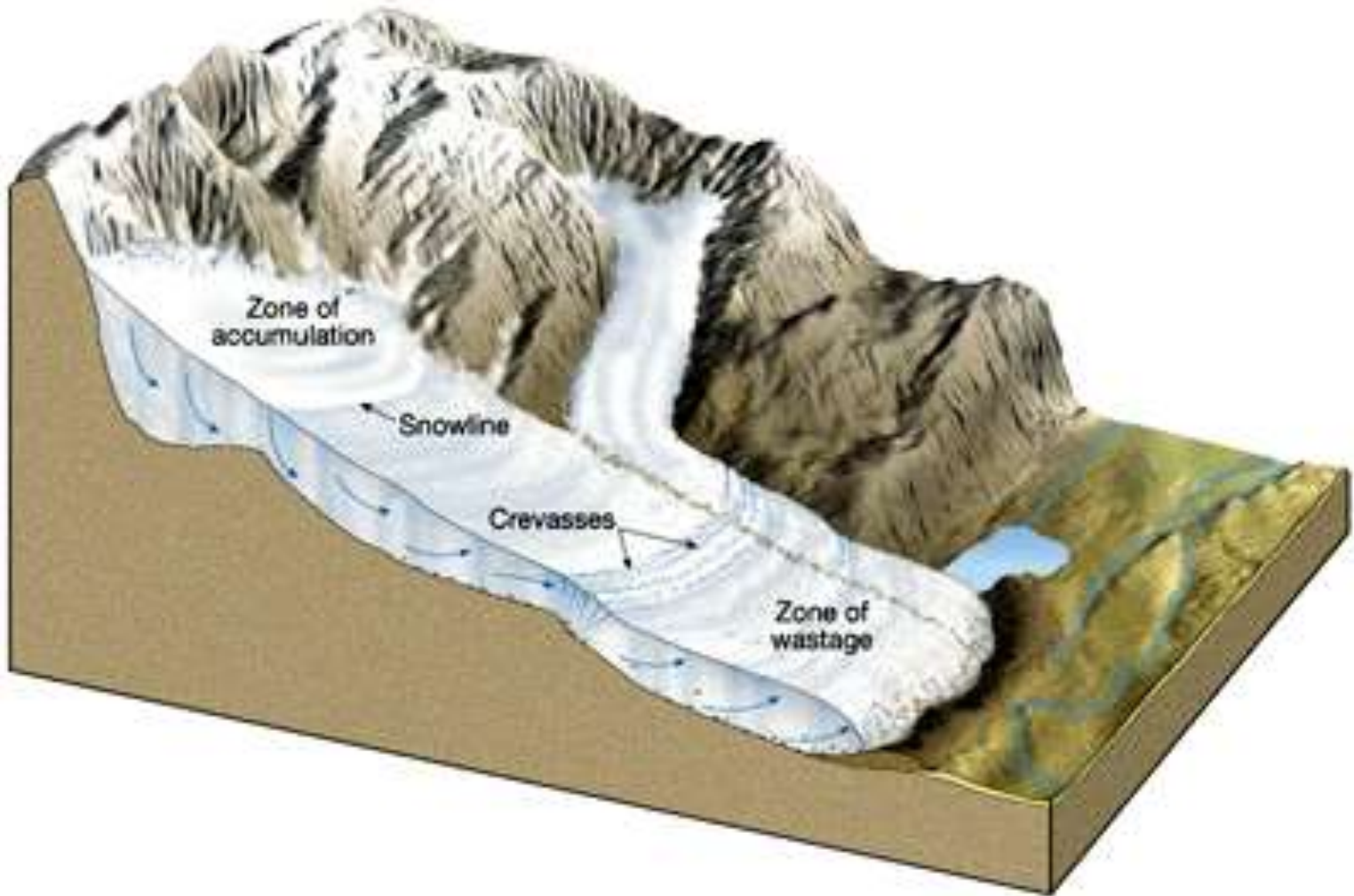
BREIÐDALSETUR
MÁLVIÐINDI – VÆÐFÆÐI – SAGAN
RESEARCH AND HERITAGE CENTRE













BREIDDALSSETUR
MÁLVIÐI - TARBÆÐI - SAGAN
KEMARGI AND HERITAGE CENTRE









BREIDDALSSETUR
MÁLVIÐI - TARBÆÐI - SAGAN
RESEARCH AND HERITAGE CENTRE





BREIDDALSSETUR
MÁLVIÐI - TARBÆÐI - SAGAN
RESEARCH AND HERITAGE CENTRE





BREIDDALSSETUR
MÁLVIÐI - TARBÆÐI - SAGAN
RESEARCH AND HERITAGE CENTRE







BREIDDALSSETUR
MÁLVIÐI - VABBEIÐI - SAGAN
RESEARCH AND HERITAGE CENTRE





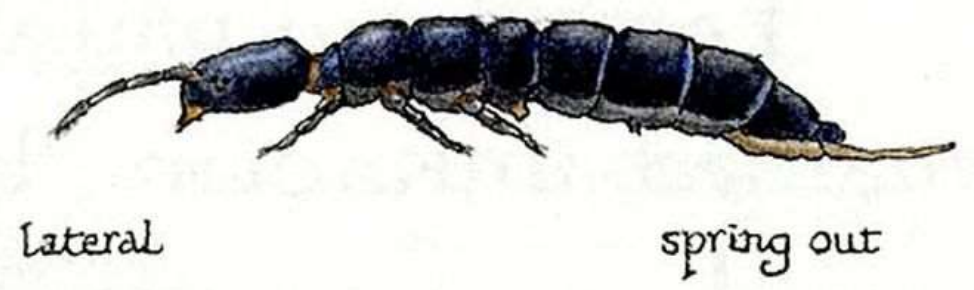
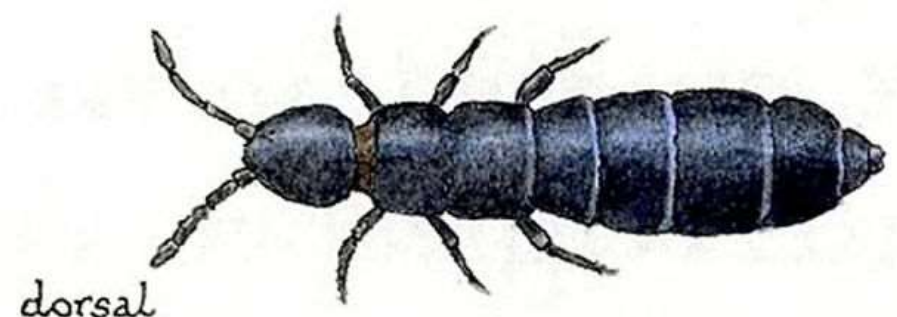
BREIDDALSSETUR
MÁLVIÐI - TARBÆÐI - SAGAN
RESEARCH AND HERITAGE CENTRE



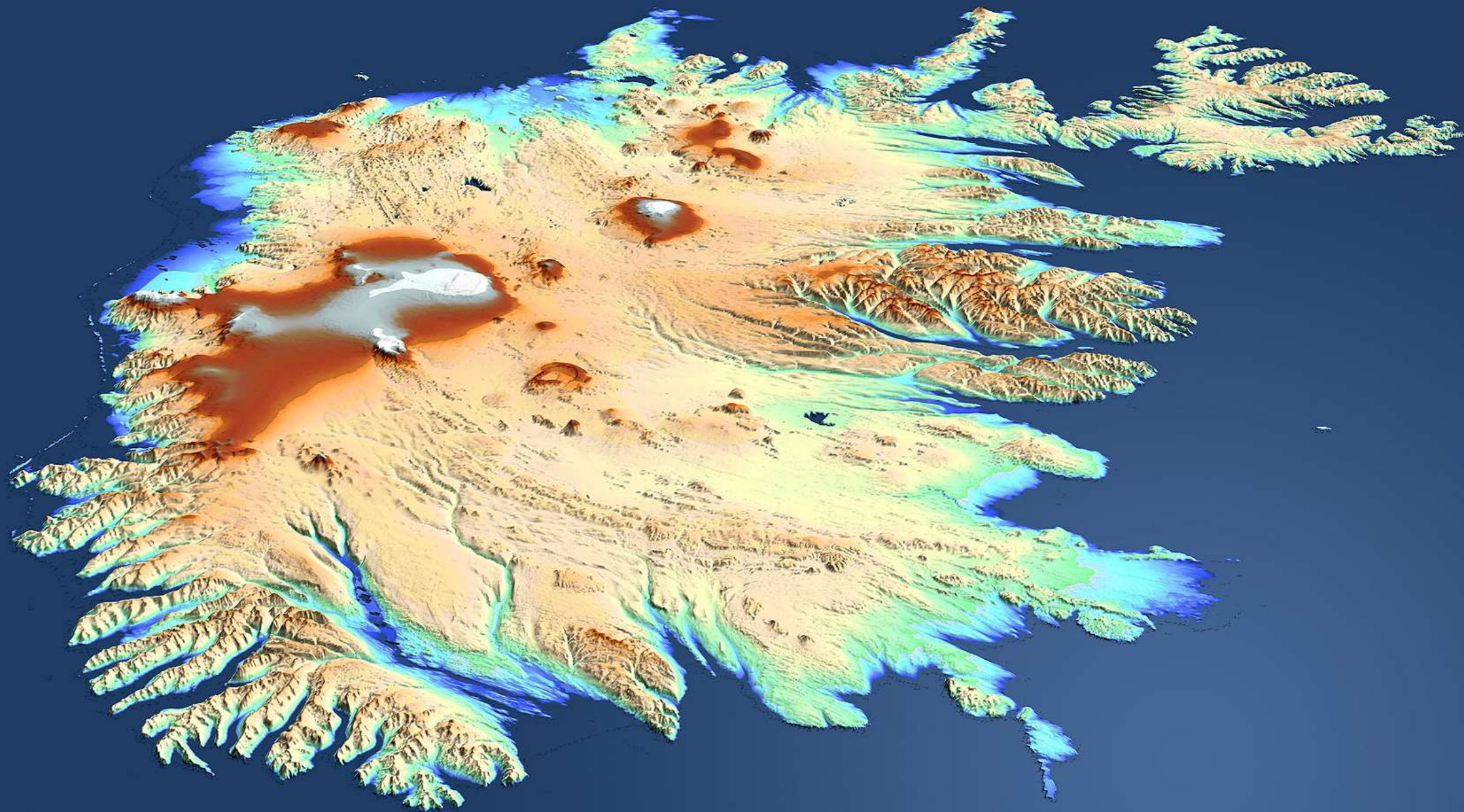


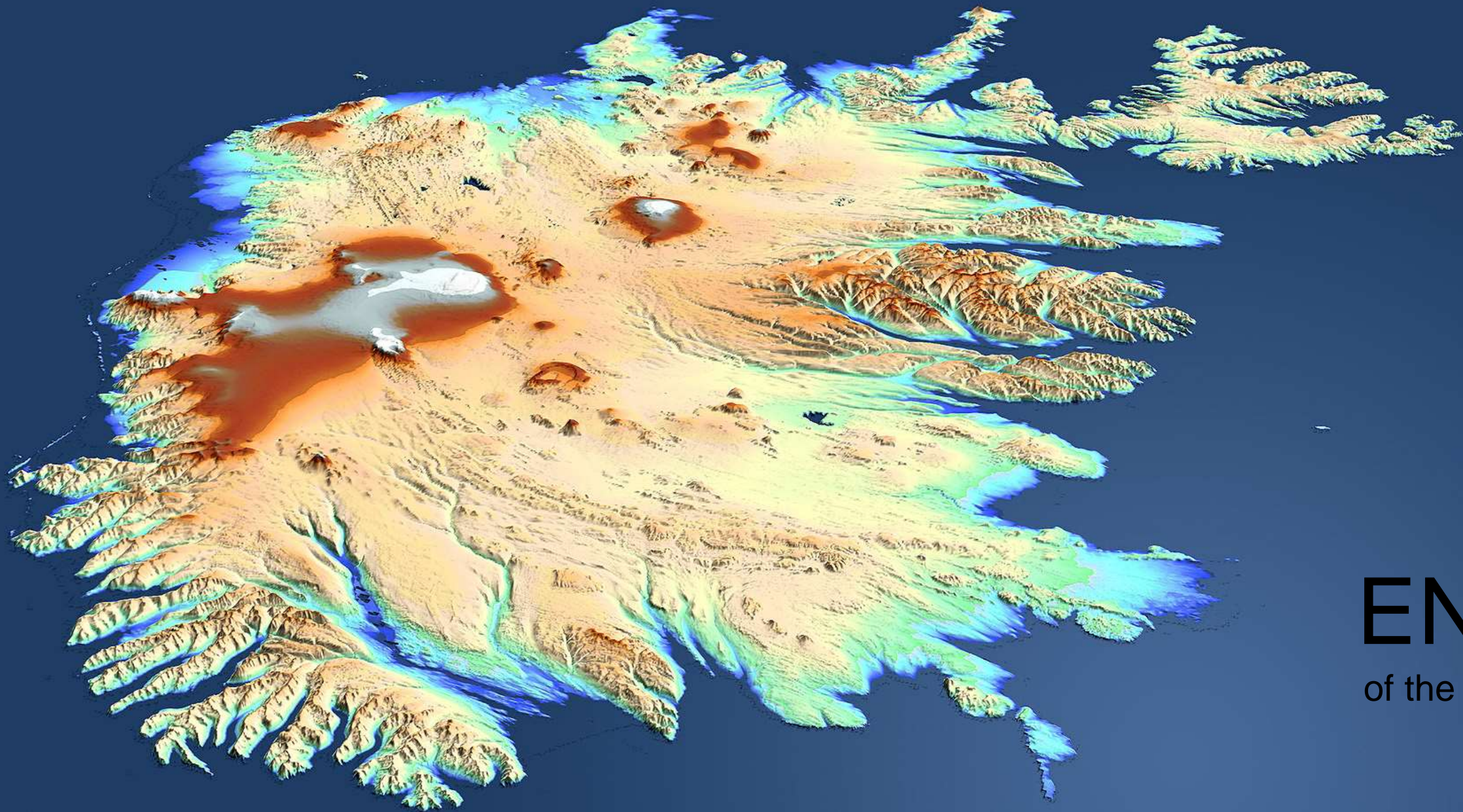
BREIDDALSSETUR
MÁLVIÐI - LARBEIÐI - SAGAN
RESEARCH AND HERITAGE CENTRE





Glacier flea (*Isotoma saltans*)





END
of the story